



2017
**ANNUAL
REPORT**
TO THE COMMUNITY

www.scps.us

MEET THE SUPERINTENDENT

Walt Griffin, Ed.D.



Dear Citizens of Seminole County,

I am incredibly proud of the ever-growing opportunities that are available to all of our students. The School Board and I have made it a top priority to listen and provide high quality programs and curriculum to all of our future ready students. Because of this, Seminole County Public Schools (SCPS) remains one of the best college preparation districts in the nation and an "A"-rated district by the Florida Department of Education (FDOE). Our students completed more than 15,000 college level Advanced Placement (AP) exams with a pass rate that exceeds the state and national average. This opportunity gives high school students college credit while still in high school. The graduating class of 2017 earned more than \$59 million in scholarships and boasted 1,117 Florida Academic Scholars, 517 Florida Medallion Scholars, 67 Gold Seal CAPE Scholars and 109 Gold Seal Vocational Scholars.

Thanks to your hard work, we are well on our way to ensuring "One Year's Growth, in One Year's time" for all of our students. To help us achieve our goals, we have incorporated new curriculum and are further expanding on areas where our students continue to flourish. The School Board and I are committed to a successful introduction of our new Problem Solving Incubator (PSI) High program at Lyman, Lake Mary and Seminole High Schools. Additionally, our continued close partnership with Seminole State College gives our students the opportunity to begin career and college preparation early through dual-enrollment programs. Beginning this school year, Lake Howell High School will start a new Business AA Degree program thanks to a partnership with Seminole State College. Altamonte and Pine Crest Elementary Schools are transitioning into "Code to the Future" computer science immersion schools that will give their students a first-hand experience in learning to code.

We believe that every student should have the option to form their own unique path when it comes to receiving an education. SCPS offers ePathways as a way for students to pick and choose the classes they feel will best prepare them for the professional future they desire. As the major economic driver of Seminole County, our school system is committed to ongoing evaluation and repurposing of programs so that our students interact with the business community in genuine internships and become high performing workers. As Superintendent of SCPS, I assure you that we will remain a premier national school district in the state of Florida and will continue to be a national model for promoting equity through excellence.

With more than 67,000 students in our district, I am proud of the growth we've achieved and the accomplishments we've accumulated. The continuous support from our parents, teachers, administration and community is what truly makes being a part of Seminole County so rewarding!

Walt Griffin, Ed.D.
Superintendent

MEET THE SCHOOL BOARD



Karen Almond
School Board Member

With a heart for serving this community, Karen has been a community and education advocate for more than 22 years and was first elected to the School Board in 2010. She has dedicated thousands of volunteer hours within the school system, the City of Casselberry, Seminole County, and grassroots political campaigns - helping to elect others who serve and support the needs and best interests of our students and community.



Jeffrey Bauer
School Board Member

Jeff Bauer comes from a long line of individuals dedicated to public service and is the eldest child of late District One Board Member Diane Bauer. Having lived in Seminole County for over forty years, Jeff is an example of the education excellence produced by the Seminole County Public School system. Through community service and leadership roles in public education organizations, he continues to fulfill his long time interest in public education. He currently serves as Chairman of the Seminole County Early Learning Coalition, Seminole State Board of Trustees, Seminole State College Foundation and the Florida Early Learning Council.



Tina Calderone, Ed.D.
School Board Member

Tina Calderone has been a lifelong public school advocate and was first elected to the School Board in 2010. She and her husband have been residents of Seminole County since 1989 and both of their children have graduated from SCPS. Tina is a proven community leader and volunteer as is evidenced by her membership in all of Seminole County's Chambers of Commerce and has served on the boards of the Greater Seminole County Chamber of Commerce, School Readiness Coalition and Seminole County Library Advisory Board.



Amy Lockhart
School Board Member

Amy was elected to the School Board in 2012. She is actively engaged in our community as a member of the Sallie Harrison Chapter of the National Society Daughters of the American Revolution, the Seminole County League of Women Voters, C.L.E.O. (Community Leaders and Elected Officials) and the Seminole County Regional Chamber of Commerce. In addition, she serves on the Central Florida Zoological Board of Directors and Seminole County Value Adjustment Board.



Abby Sanchez
School Board Member

Abby has been a resident of Central Florida since 1999. She has 26 years of experience teaching elementary age children. She was the recipient of the "Beginner Teacher of the Year" in Tallahassee in 1992. Abby is currently an active member of the Seminole Chamber of Commerce, Sanford Chamber of Commerce, Oviedo/Casselberry Chamber of Commerce, Altamonte Chamber of Commerce, League of Women Voters, Junior League, Delta Kappa Gamma-Beta Chi (Women's Educator's Society), Seminole Education Association and the Seminole Republican Executive Committee.

FSA/EOC RANKING 2016-2017

Seminole County Public Schools ranked 1st or 2nd in Central Florida out of the 17 largest districts in nearly all subject areas and grade levels on FSA ELA, Math, the statewide Science assessment and End-of-Course Exams

Subject	Grade	Central Florida	17 Largest Districts
ELA	3rd Grade	1	1
	4th Grade	1	1
	5th Grade	2	2
	6th Grade	2	2
	7th Grade	1+	1+
	8th Grade	1	1
	9th Grade	2	2
Math	10th Grade	1	1
	3rd Grade	1	1+
	4th Grade	1	1
	5th Grade	1	5
	6th Grade	2	2+
	7th Grade	1	2
Science	8th Grade	1	4
	5th Grade	1	1
End of Course Exams			
Algebra I	All Grades	1	2
Geometry	All Grades	1	1
Algebra II	All Grades	1	3
Biology	All Grades	1	2
Civics	All Grades	2	2
US History	All Grades	1	1

SCHOOL CHOICE

5,378
students

School Transfers

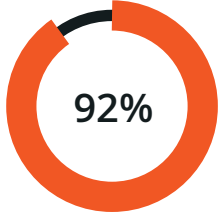
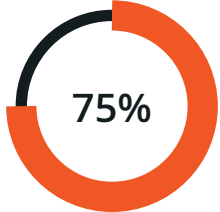
Total number of student transfers granted for the 2016-2017 school year

17,519
students

Magnet School Transfers

Total number of students attending magnet schools for the 2016-2017 school year

SCHOOL GRADES



Elementary Schools
75% of Elementary Schools earned an A or B

A	14
B	13
C	7
D	2
F	0

Middle Schools
92% of Middle Schools earned an A or B

A	5
B	6
C	1
D	0
F	0

High Schools
100% of High Schools earned an A or B

A	3
B	6
C	0
D	0
F	0

COMMUNITY SUPPORT



Business Partners - 930 partners
Total number of local businesses registered as official partners with SCPS.



PTA Membership - 16,499 people
Total number of PTA members registered in the district.



Dividends - 29,546 people
Total number of parent and community volunteers registered in the district.



EPathways INITIATIVE

For more information on ePathways options, visit our website: www.scps.k12.fl.us/epathways or send an email to ePathways@scps.us or contact your child's school counselor.

Seminole County Public Schools is implementing its ePathways initiative to develop personalized learning environments that meet the unique, individualized needs of each student. ePathways reflects our school district's commitment to the families, communities and employers in Seminole County that graduates of our PreK-12 system will be ready for the challenges that await them in our democratic society and dynamic economy. Some students will wish to prepare for a university education in an academic, STEM or arts field, while others will choose to pursue technical training that leads to industry certification or mastery of career-ready skills. SCPS embraces multiple pathways for student success—our goal is to provide a world-class education for all students! This commitment includes rigorous programs for high school students as well as opportunities for elementary and middle school students to explore careers, identify their interests and pursue their passions.

Seminole County Public Schools also recognizes that today's students learn in different ways, at different rates and on different schedules. ePathways embraces innovative educational models including flexible scheduling, blended learning and virtual education. Our schools now offer the flexibility to accommodate today's students and families through a variety of choice programs that include magnet schools and programs of emphasis. Virtual educational programs are available for students in grades K-12 as either a full-time school option or on a part-time basis to create a blended schedule of traditional and online courses. High school students can also access after-school career courses in fields such as aerospace, automotive, cosmetology, culinary, interior design, robotics and technical design.



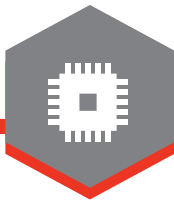
HIGH SCHOOL MAGNET SCHOOLS AND PROGRAMS

SCPS is dedicated to the preparation of students for the workplace and the innovation economy. Each high school in the district provides unique opportunities for career pathways that are relevant for a career pathway in today's job market and economy. These programs are designed to meet the requirements of higher education and the workplace, leading to students who are both college and career ready.

A Magnet School or Magnet Program has a singular theme or focus, providing unique opportunities for in-depth experience and studies in a specific area of interest. Admission to a Magnet School or Magnet Program is open to all students who are residents of Seminole County by application only.

Additional information may be found at:

www.seminoleschoolchoices.us



CROOMS ACADEMY INFORMATION TECHNOLOGY

Seminole County's only district-wide magnet high school. Crooms AOIT provides cutting edge innovation in teaching and learning through a technology-enriched environment. Students at Crooms engage in a rigorous and relevant curriculum that prepares them for post-secondary education with industry-validated technology skills.



LYMAN HIGH INSTITUTE FOR ENGINEERING

This program utilizes Project Lead the Way (PLTW) to provide a nationally recognized curriculum that is highly creative, technology rich and emphasizes college preparatory skills. Students are exposed to an integrated curriculum infused with rigorous and relevant industry innovations and technology. This world-class program is designed for any student interested in pursuing a career in engineering.



LAKE HOWELL HIGH CYBERSECURITY

The cybersecurity program introduces students to a multifaceted curriculum that will teach them the foundational knowledge and skills needed in computer and network security, attack mechanisms and techniques, intrusion detection and prevention. This unique program is designed to prepare students for careers in computer science and cyber defense.



SEMINOLE HIGH ACADEMY OF HEALTH CAREERS

A comprehensive, rigorous academic program of college preparation and uniquely relevant curriculum for students who plan to pursue a career as a health care professional. Hands-on learning opportunities enable students to preview various health care careers through job shadowing and clinical experiences in area hospitals, clinics, and medical and veterinary offices.



SEMINOLE & WINTER SPRINGS HIGH INTERNATIONAL BACCALAUREATE

An internationally recognized, rigorous pre-university course of study that incorporates an extensive liberal arts curriculum containing humanities, social studies, world languages, mathematics, and science. The IB Diploma Program, affiliated with the International Baccalaureate Organization, is designed for highly motivated college-bound students seeking educational challenges. The curriculum is based on international standards and examinations that are evaluated by international educators.

MIDDLE SCHOOL MAGNET SCHOOLS AND PROGRAMS

Four Seminole County Public Schools (SCPS) magnet middle schools offer students learning opportunities that take them beyond traditional instructional experiences. Students may also enroll in the SCPS Pre-IB Preparatory Program which offers an extensive course of study in math, science, world language, social studies and language arts—with an emphasis on independent

study, in-depth learning and accelerated curriculum requirements. All middle school students residing in Seminole County are eligible to apply to a middle school magnet school. Assignment for out-of-zone students is by application only. Additional information may be found at: www.seminoleschoolchoices.us



MILLENNIUM MIDDLE FINE ARTS AND COMMUNICATION

The Fine Arts and Communication Program at Millennium Middle School is designed to serve the academic and creative needs of every student. A stellar academic core curriculum is enriched with instruction in visual and performing arts. Incorporating the arts into the curriculum helps to improve academic performance and enhance inquiry, critical thinking and problem-solving skills. Students have the opportunity to explore, discover, and unleash their individual potential and achieve academic excellence.



MILWEE MIDDLE PRE-ENGINEERING

Milwee Middle School utilizes the Gateway to Technology program through Project Lead the Way (PLTW) to provide a nationally recognized curriculum that is a highly creative, technology rich, and emphasizes college preparatory skills. Students are exposed to an integrated curriculum infused with rigorous and relevant industry innovations and technology. This world-class program is designed for any student interested in pursuing a potential career in engineering.



SANFORD MIDDLE MATH, SCIENCE & TECHNOLOGY

This magnet school focuses on math, science, and technology. Its labs and classrooms offer opportunities for discovery and exploration. Throughout the school, subjects are studied in depth, and the curriculum puts each student at the center of learning. The intensive academic program, coupled with extracurricular and co-curricular opportunities, proves a wonderful vehicle to teach and develop the skills necessary to succeed—not only in school, but also in life.



SOUTH SEMINOLE MIDDLE LEADERSHIP AND GLOBAL CONNECTIONS

The Leadership and Global Connections magnet school focuses on sparking the student's initiative and leadership potential in a global society. The curriculum develops the skills students need to become productive and responsible leaders of the future. Students have the opportunity to explore the language and culture of societies that impact our daily lives. Current technology is utilized to connect with other schools throughout the world to investigate global issues.

ELEMENTARY SCHOOL MAGNET SCHOOLS AND PROGRAMS

All elementary students residing in Seminole County are eligible to apply to an elementary magnet school. Assignment is by application only. Students are assigned based on seat availability through a random-selection process. Additional information may be found at: www.seminoleschoolchoices.us



GOLDSBORO ELEMENTARY
MATH, SCIENCE & TECHNOLOGY

This magnet school emphasizes math, science, and technology and is home to the Kids Space Center. The natural connection between math, science, and technology is enhanced through a strong literacy program that aligns with district and state standards. A scientifically research-based reading program forms the foundation for this rich curriculum that builds a balanced learning environment. Writing and social studies skills are developed along with the magnet focus on math, science, and technology. Students are provided opportunities to explore their talents and strengths in music, art, and physical education.



HAMILTON ELEMENTARY
SCHOOL OF ENGINEERING & TECHNOLOGY

This district-wide magnet program specifically focuses on the field of Educational Robotics and features state-of-the-art Robotics labs. Utilizing an interdisciplinary approach, students will engage in learning that is infused with Science, Technology, Engineering and Mathematics (STEM) as the primary vehicle.



MIDWAY ELEMENTARY
SCHOOL OF THE ARTS

This magnet school offers an arts infused core curriculum and performing arts instruction that develops talents including ballet, dance, band, orchestra, vocal music, and art. Whether they're learning mathematical principles by studying an Alexander Calder mobile, understanding sound waves by exploring different percussion instruments or delivering the news from "virtual" locations designed in the digital graphics lab, students at Midway Elementary School of the Arts are learning the art of excellence both on stage and in the classroom.

PROGRAMS OF EMPHASIS

For more information about Programs of Emphasis, visit: www.scps.k12.fl.us/epathways and for additional information on transfer options, visit: www.seminoleschoolchoices.us

SCPS is dedicated to the preparation of students for the workplace and the innovation economy. Each high school in the district provides unique opportunities that are relevant for a career in today's job market. These Programs of Emphasis are designed to prepare students to be both college and career ready.

Students must be zoned for the school or eligible for an approved transfer in order to attend. Industry certifications and dual enrollment credit may be earned through successful completion of coursework and testing.



HAGERTY HIGH

Modeling, Simulation & Analysis

The Modeling, Simulation and Analysis Program teaches students the fundamentals of modeling and simulation, a high-demand, high-wage industry in Central Florida.



LAKE BRANTLEY HIGH

Finance Academy

The Finance Academy Program offers a curriculum comprised of finance and business technology including accounting applications and personal financial planning.



LAKE HOWELL HIGH

Culinary Arts

The Culinary Arts Program allows students to explore all facets of the culinary field, including entrepreneurship, in an industry-standard commercial kitchen.



LAKE HOWELL HIGH

Cybersecurity

The Cybersecurity Program introduces and prepares students for careers in computer science and cyber-defense in multiple industries.



LAKE HOWELL HIGH

Entrepreneurship

The Entrepreneurship Program curriculum introduces the broad spectrum of business, industry, and small business initiatives.



LAKE MARY HIGH

Advanced Manufacturing & Innovation

The Advanced Manufacturing program gives students the opportunity to design and prototype innovative products using high-tech, industry standard equipment.



LAKE MARY HIGH

Forensic Science & Legal Studies

This program includes two tracks: Forensic Science uses groundbreaking modern scientific technology in crime scene investigation and Legal Studies teaches the foundations of our legal system.



LYMAN HIGH

Teaching, Learning & Leadership

The Teaching, Learning & Leadership Program empowers students to embrace their potential future as educators and fosters their knowledge of the education profession.



OVIDEO HIGH

Bioscience Technology

The Bioscience Technology Program provides preparation for the career fields of applied biology in industry, medicine, and agriculture.



WINTER SPRINGS HIGH

Renewable Energy

The Renewable Energy Program allows students to study energy technologies and the advantages, disadvantages, and limitations of renewable energy resources for a sustainable future.

TAX DOLLARS AT WORK

Planning and action are well underway for numerous safety enhancements and major campus wide remodeling/renovations throughout the District.

PROJECTS UNDER CONSTRUCTION

New Millennium Middle Magnet School – Open August 2018

New Fine Arts and Communications Middle School Magnet Campus

1,751 Student Capacity

200,400 Square Foot Multi-Building Campus

815 Seat Capacity Performance Auditorium

Adaptation of Existing Millennium Middle School to Ninth Grade Center for Seminole High School

Refresh the campus interior finishes and accommodate both Ninth Grade Center and PSI High programs.

Relocation of the Media Center to Glover Hall (Building 7)

Plumbing upgrades at student restrooms

Remodeling of west wing of Building 5 to accommodate PSI High group working spaces, individual working spaces, and classrooms for project based learning

Remodel of Kitchen and Serving Lines (Building 3)

Seminole High School Career Education Addition – Open August 2018

23,800 Square Foot Structure

Aeronautic, Auto, Carpentry & Industrial labs

Site enhancement to support programs

Midway Elementary ILC – Open August 2018

Two Story Prototype Classroom Structure

312 Student Capacity

31,700 Square Foot Structure

PROJECTS UNDER DESIGN

Lake Brantley High School Building 5 Replacement & Building 3/4 Renovation

Pine Crest Elementary School of Innovation Renovations, Additions & Remodeling

New Elementary School Campus “M”

COMPLETED PROJECTS

Longwood Elementary School Campus Reopening

Hamilton Elementary School Renovations, Additions and Remodeling – Open August 2017

Wekiva Elementary School Renovations, Additions and Remodeling – Open August 2017

STEM Classrooms at all 37 District Elementary School Campuses

CODE TO THE FUTURE

SCPS was pleased to launch its partnership with Code To The Future this year, as two of our own schools, **Altamonte and Pine Crest Elementary**, were the only two schools in Florida selected for this program.

Code To The Future is America's first Comprehensive Solution for Computer Science Immersion. Seminole County Public Schools (SCPS) was pleased to launch its partnership with Code To The Future this year, as two of our own schools, Altamonte and Pine Crest Elementary, were the only two schools in Florida selected for this program. Students at these schools will have the opportunity to learn fundamentals of Computer Coding as part of their daily curriculum. Through this 21st century literacy, students will develop critical thinking, creativity, communication and collaboration skills. Using a Gradual Release of Responsibility (GRR) Model, Code To The Future Coaches will model instruction of the Code To The Future curriculum for teachers by working onsite directly with the students in the classroom. The purpose of this approach is to build capacity and confidence within the teachers. This support is effective in ensuring success for teachers in progressing into the stage of co-leading instruction along with the coaches. The program is designed to help students attain the skills needed for success later in their education and to have the opportunity to meet the demand for skilled employees in this field. Code To The Future will engage and teach students through innovative ways such as block-based programming languages, robotics and text-based programming environments. The theme for

the block-based programming cycle is based on Scratch (a programming language from MIT), the robotics cycle theme is based on LEGO - including hands-on manipulatives and robotics, and the text-based programming theme is based on Minecraft (SCPS Action Item 4850). The curriculum starts students with hands-on activities and Scratch programming in Kindergarten, and to prepare students for exposure to Java in 4th and 5th grade.



PSI HIGH

A brand new program exclusive to SCPS that helps the community and is a Problem Solving Incubator for students in Seminole County.



PSI High School is a new school program at Seminole County Public Schools (SCPS) that looks like a lean startup. SCPS was the only school district in Florida to receive a \$1 million grant from XQ: The Super School Project to help fund this problem-solving high school concept. Instead of being created from the top-down, PSI High is a school designed by its users: students, parents, community partners, and teachers to address some alarming trends in high school graduates. The PSI High solution to adapting to real-life workforce situations is to create a school that looks and operates like a business. Our core mission is for students to learn through doing high-quality work on real-world projects with our partners. Part of the day may be spent at our campus in design labs, conference rooms, and co-working spaces, or students may choose to work offsite with a partner at a business or in the field. Regardless of where a student spends their time, they will receive credit when they successfully showcase skills and complete high-quality, project deliverables. We are proud to call this county home to one of the 18 schools nationally recognized for innovation as a XQ Super School.



SEMINOLE COUNTY
PUBLIC SCHOOLS
VALEDICTORIANS

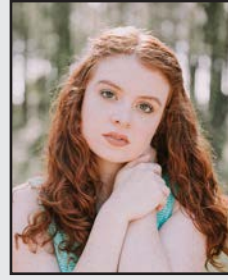
Class of 2017



**Ryan
Mackler**
Crooms AOIT



**Zachary
Weishampel**
Hagerty High



**Erin
Harvey**
Lake Brantley High



**Stephen
Lawrence**
Lake Howell High



**Dhruv
Dadhania**
Lake Mary High



**Fernando
Zapata**
Lyman High



**Nikhil
Patel**
Oviedo High



**Jimmy
Qin**
Seminole High



**Olivia
Ellis**
Seminole High



**Ruth
Nguyen**
Seminole High



**Sabrina
Chowdhury**
Seminole High



**Andrew
Ouellette**
Winter Springs High

The graduating class of 2017 earned more than **\$59 million** in scholarships and boasted **1,117** Florida Academic Scholars, **517** Florida Medallion Scholars, **67** Gold Seal Scholars and **109** Gold Seal Vocational Scholars!



 @SCPSINFO

 /SEMINOLECOUNTYSCHOOLS

2016-2017 ANNUAL REPORT

The publication is supported by private donations and is provided to inform Seminole County taxpayers about public schools.

SCPS EDUCATIONAL EQUITY - NOTICE OF NONDISCRIMINATION

The Educational Equity Administrator for Seminole County Public Schools has the responsibility of assuring compliance with the educational equity requirements by providing technical expertise, monitoring activities or programs related to compliance, and responding to equity complaints. One of the responsibilities is to administer the Educational Equity Complaint/Grievance Procedures as adopted by the School Board. It is the policy of the School Board of Seminole County, Florida, that no employee, student, or applicant shall - on the basis of race, color, national origin, sex, disability, marital status, age, religion, or any other basis prohibited by law - be excluded from participating in, be denied the benefits of, or be subjected to discrimination and harassment under any educational programs, activities, or in any employment conditions, policies, or practices conducted by the District. Additionally, the School board of Seminole County provides equal access to public school facilities for the Boy Scouts of America and other designated youth groups as required by 34 C.F.R. 108.6.

Every employee, student, or applicant for employment at Seminole County Public Schools has a solemn right to be treated fairly, equally, equitably, and with dignity. If for any reason you - the employee, student, or applicant for employment - find that you have been victimized by acts of discrimination and or harassment, whether intentional or unintentional, you are strongly encouraged to file an Educational Equity Complaint or Grievance with the Educational Equity Administrator, or any county or school-level administrator. All such complaints must be immediately forwarded to the Educational Equity Administrator for dissemination, action, and resolution. Forward to: SCPS Educational Equity Administrator, Seminole County Public Schools, Educational Support Center, 400 E. Lake Mary Blvd., Sanford, FL 32773-7127. (407) 320-0198.

For more information, please contact:
Community Involvement/Public Information
Seminole County Public Schools
400 East Lake Mary Blvd.
Sanford, Florida 32773
Phone: 407-320-0184
www.scps.us